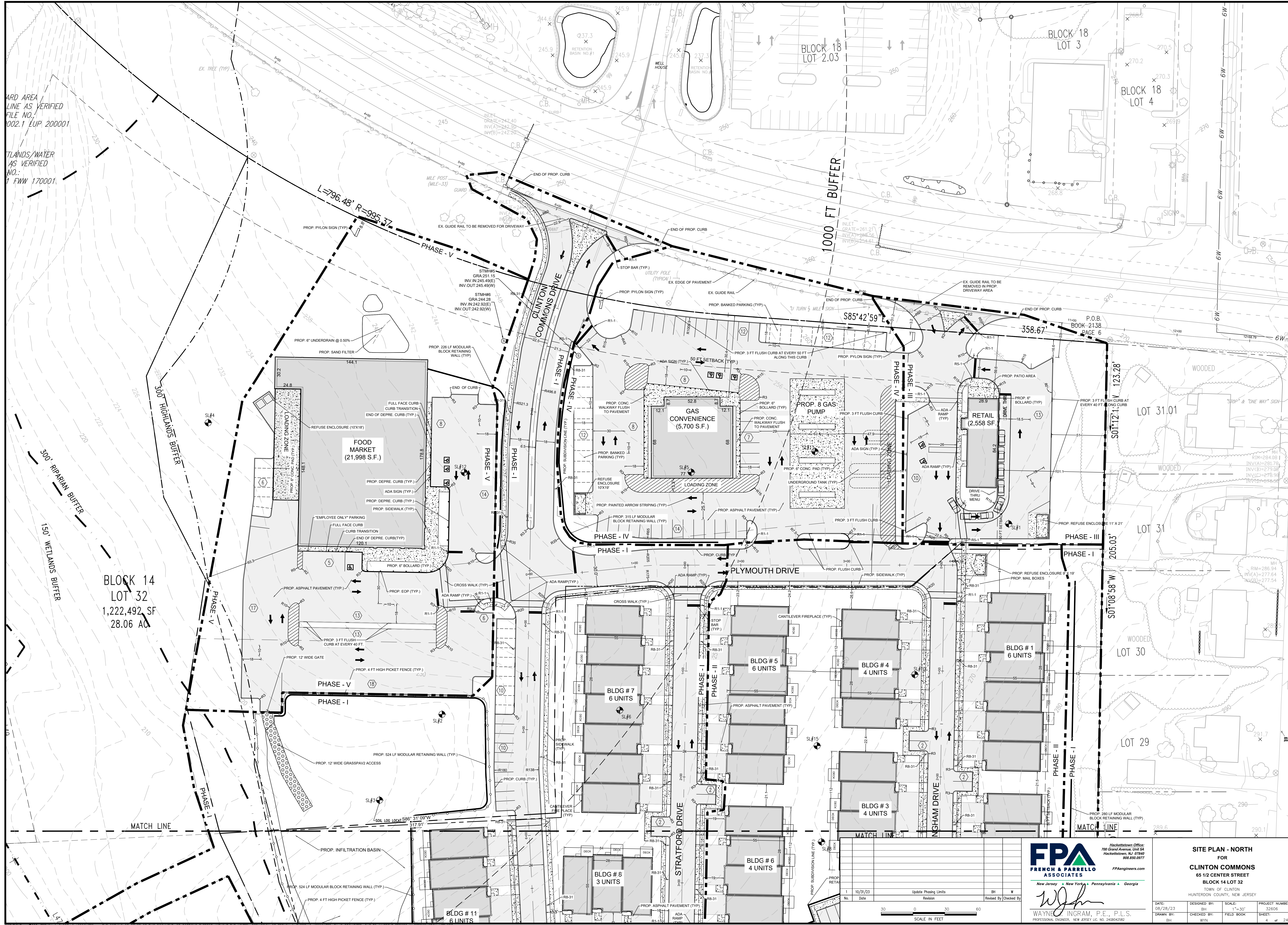


WARD AREA
LINE AS VERIFIED
FILE NO.
002.1 LUP 200001

LANDS/WATER
AS VERIFIED
NO.
FWW 170001



BLOCK 14
LOT 32
1,222,492 SF
28.06 AC

BLOCK 18
LOT 3

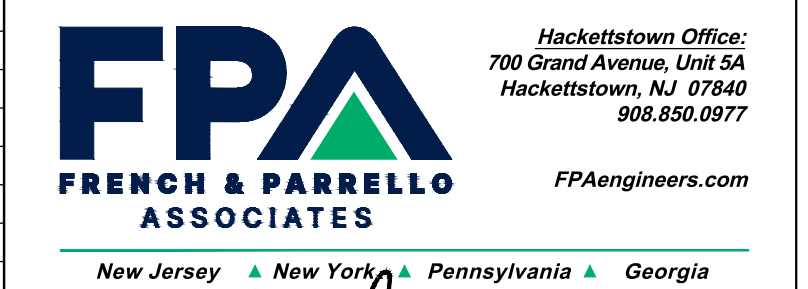
BLOCK 18
LOT 4

LOT 31.01

LOT 31

LOT 30

LOT 29



Hackettstown Office:
700 Grand Avenue, Unit 5A
Hackettstown, NJ 07840
908-850-0977

PAEngineering.com

New Jersey • New York • Pennsylvania • Georgia

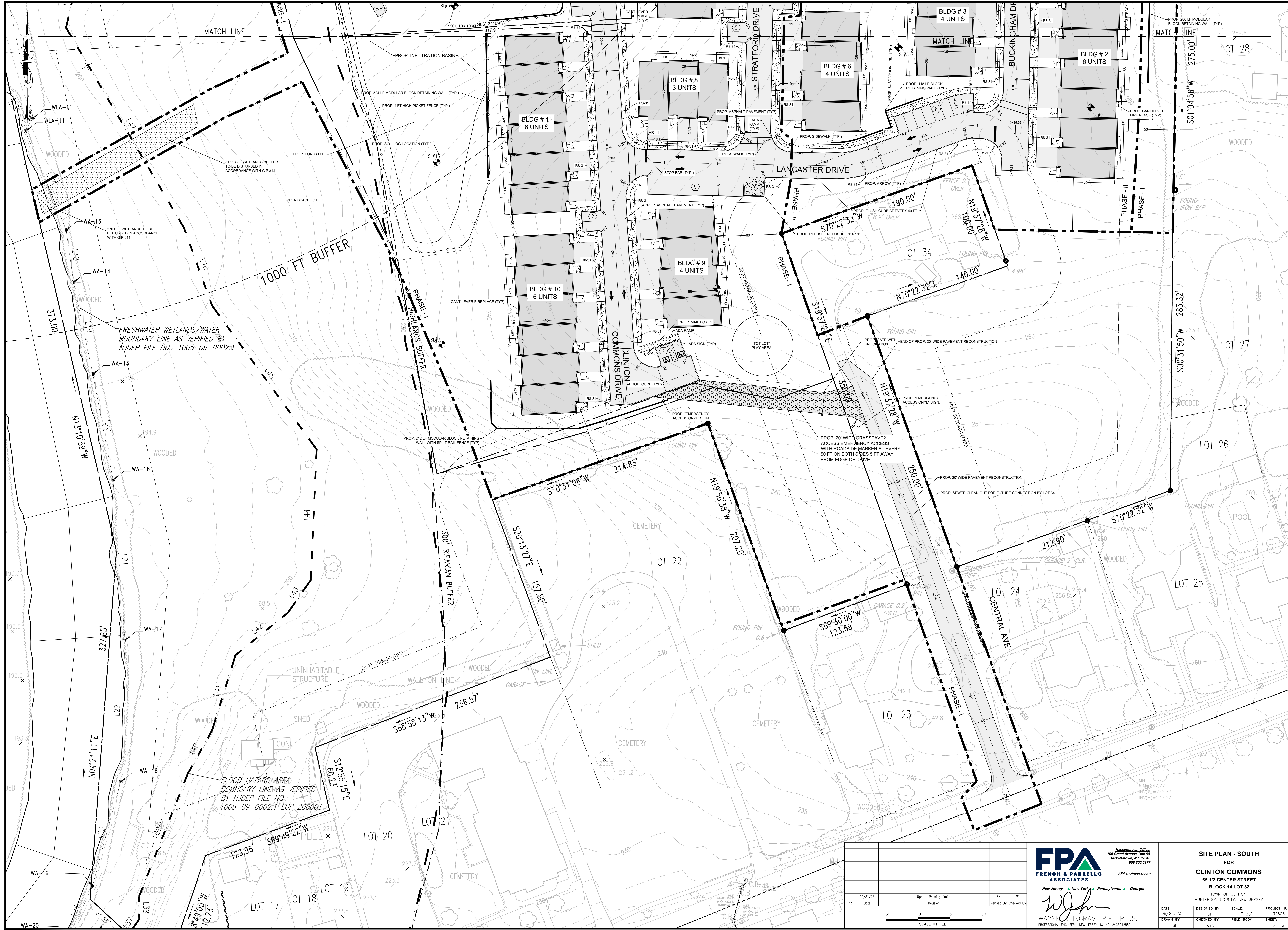
SITE PLAN - NORTH
FOR
CLINTON COMMONS
65 1/2 CENTER STREET
BLOCK 14 LOT 32
TOWN OF CLINTON
HUNTERDON COUNTY, NEW JERSEY

No.	Date	Revision	By	Checked By
1	10/31/23	Update Phasing Limits	BH	W

Wayne C. Ingram, P.E., P.L.S.
PROFESSIONAL ENGINEER, NEW JERSEY LIC. NO. 2403042502

DATE:	DESIGNED BY:	SCALE:	PROJECT NUMBER:
08/28/23	BH	1"=30'	32606
DRAWN BY:	CHECKED BY:	FIELD BOOK:	SHEET:
BH	WYN		4 of 24

COPYRIGHT © 2023, FRENCH & PARRELO ASSOCIATES - THE COPYING OR REUSE OF THIS DOCUMENT, OR PORTIONS THEREOF, WITHOUT THE WRITTEN PERMISSION OF FRENCH & PARRELO ASSOCIATES, IS PROHIBITED. DUE TO INHERENT ERRORS IN REPRODUCTION METHODS, ERRORS MAY OCCUR WHEN SCALING THIS DRAWING.



FRESHWATER WETLANDS/WATER BOUNDARY LINE AS VERIFIED BY NUDEP FILE NO.: 1005-09-0002.1

FLOOD HAZARD AREA BOUNDARY LINE AS VERIFIED BY NUDEP FILE NO.: 1005-09-0002.1 LUP 2000001

No.	Date	Revision	By	W
1	10/31/23	Update Phasing Limits	BH	W
		Revised	By	Checked by

SCALE IN FEET

30 0 30 60

FPA
FRENCH & PARRELLO ASSOCIATES
New Jersey • New York • Pennsylvania • Georgia

Hackettstown Office:
700 Grand Avenue, Unit 5A
Hackettstown, NJ 07840
908-850-0977

Wayne C. Ingram, P.E., P.L.S.
PROFESSIONAL ENGINEER, NEW JERSEY LIC. NO. 249842582

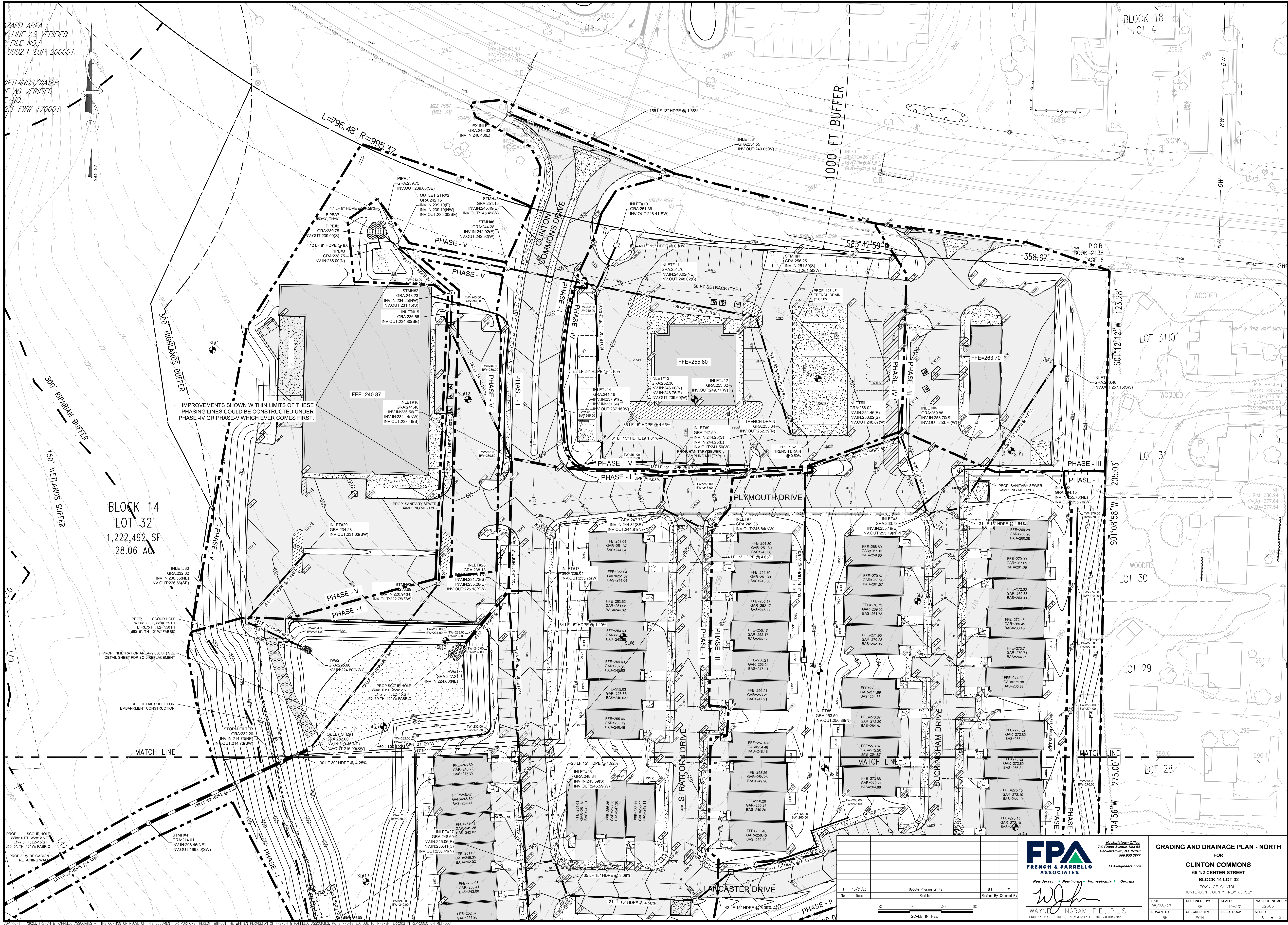
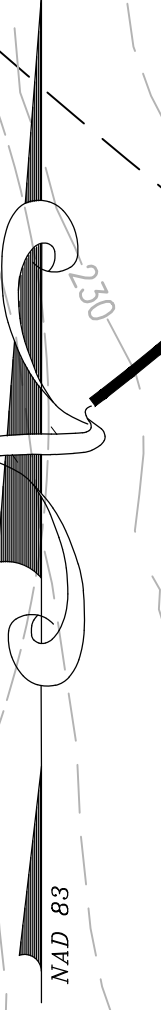
SITE PLAN - SOUTH
FOR
CLINTON COMMONS
65 1/2 CENTER STREET
BLOCK 14 LOT 32
TOWN OF CLINTON
HUNTERDON COUNTY, NEW JERSEY

DATE: 08/28/23
DESIGNED BY: BH
DRAWN BY: BH
CHECKED BY: WYN
SCALE: 1"=30'
FIELD BOOK
PROJECT NUMBER: 32606
SHEET: 5 of 24

COPYRIGHT © 2023 FRENCH & PARRELLO ASSOCIATES - THE COPYING OR REUSE OF THIS DOCUMENT, OR PORTIONS THEREOF, WITHOUT THE WRITTEN PERMISSION OF FRENCH & PARRELLO ASSOCIATES, IS PROHIBITED. DO NOT INFERENT ERRORS IN REPRODUCTION METHODS. ERRORS MAY OCCUR WHEN SCALING THIS DRAWING.

HAZARD AREA
LINE AS VERIFIED
FILE NO. 0002.1 LUP 200001

WETLANDS/WATER
LINE AS VERIFIED
FILE NO. 0002.1 FWW 170001



BLOCK 14
LOT 32
1,222,492 SF
28.06 AC

BLOCK 18
LOT 4

LOT 31.01

LOT 31

LOT 30

LOT 29

LOT 28

P.O.B.
BOOK 2138
PAGE 6

MATCH LINE

MATCH LINE

PROP. SCOUR HOLE
W1=5.0 FT, W2=12.5 FT
L1=4.75 FT, L2=15.0 FT
(50#-6", TH-12" W/ FABRIC

PROP. INFILTRATION AREA (9,850 SF) SEE
DETAIL SHEET FOR SOIL REPLACEMENT

PROP. SCOUR HOLE
W1=5.0 FT, W2=5.0 FT
L1=7.5 FT, L2=15.0 FT
(50#-6", TH-12" W/ FABRIC

PROP. INFILTRATION AREA (9,850 SF) SEE
DETAIL SHEET FOR SOIL REPLACEMENT

PROP. SCOUR HOLE
W1=5.0 FT, W2=12.5 FT
L1=4.75 FT, L2=15.0 FT
(50#-6", TH-12" W/ FABRIC

PROP. INFILTRATION AREA (9,850 SF) SEE
DETAIL SHEET FOR SOIL REPLACEMENT

PROP. SCOUR HOLE
W1=5.0 FT, W2=12.5 FT
L1=4.75 FT, L2=15.0 FT
(50#-6", TH-12" W/ FABRIC

PROP. INFILTRATION AREA (9,850 SF) SEE
DETAIL SHEET FOR SOIL REPLACEMENT

PROP. SCOUR HOLE
W1=5.0 FT, W2=12.5 FT
L1=4.75 FT, L2=15.0 FT
(50#-6", TH-12" W/ FABRIC

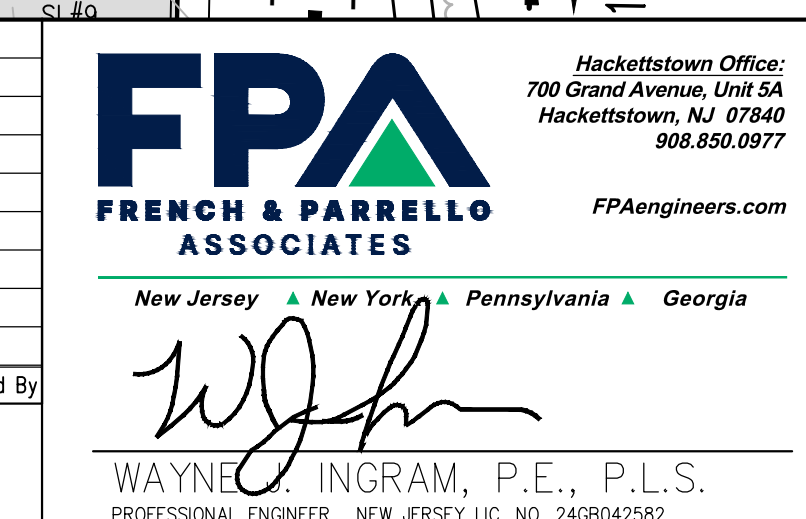
PROP. INFILTRATION AREA (9,850 SF) SEE
DETAIL SHEET FOR SOIL REPLACEMENT

PROP. SCOUR HOLE
W1=5.0 FT, W2=12.5 FT
L1=4.75 FT, L2=15.0 FT
(50#-6", TH-12" W/ FABRIC

PROP. INFILTRATION AREA (9,850 SF) SEE
DETAIL SHEET FOR SOIL REPLACEMENT

No.	Date	Revision	Revised By	Checked By
1	10/31/23	Update Phasing Limits	BH	W

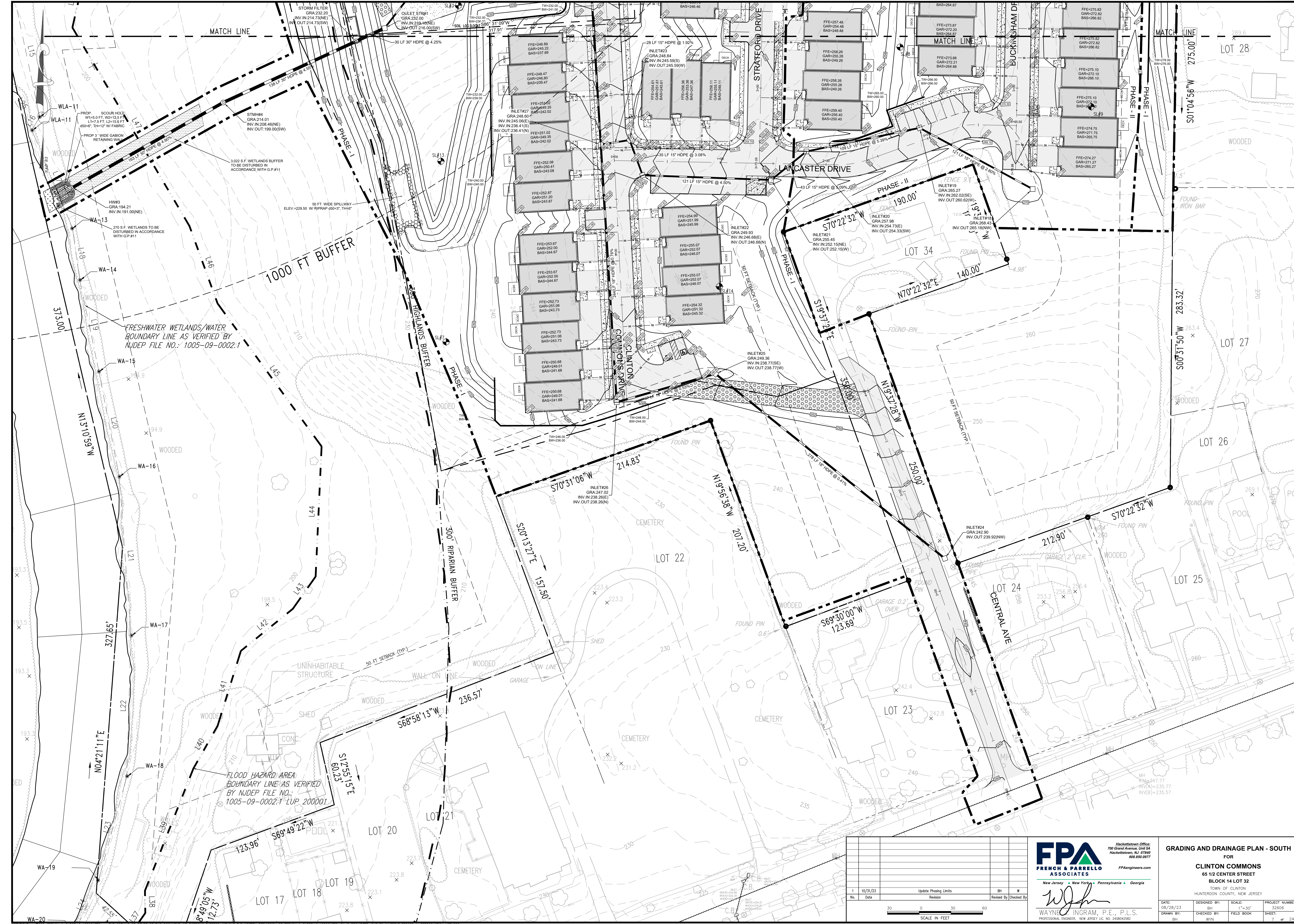
SCALE IN FEET



GRADING AND DRAINAGE PLAN - NORTH
FOR
CLINTON COMMONS
65 1/2 CENTER STREET
BLOCK 14 LOT 32
TOWN OF CLINTON
HUNTERDON COUNTY, NEW JERSEY

DATE: 08/28/23 DESIGNED BY: BH SCALE: 1"=30' PROJECT NUMBER: 32606
DRAWN BY: WJH CHECKED BY: FIELD BOOK SHEET: 6 of 24

COPYRIGHT © 2023, FRENCH & PARRELO ASSOCIATES, INC. THE COPYING OR REUSE OF THIS DOCUMENT, OR PORTIONS THEREOF, WITHOUT THE WRITTEN PERMISSION OF FRENCH & PARRELO ASSOCIATES, INC. IS PROHIBITED. DUE TO INHERENT ERRORS IN REPRODUCTION METHODS, ERRORS MAY OCCUR WHEN SCALING THIS DRAWING.



FRESHWATER WETLANDS/WATER BOUNDARY LINE AS VERIFIED BY NJDEP FILE NO.: 1005-09-0002.1

FLOOD HAZARD AREA BOUNDARY LINE AS VERIFIED BY NJDEP FILE NO.: 1005-09-0002.1 LUP 200001

No.	Date	Revision	By	Checked By
1	10/31/23	Update Phasing Limits	BH	W

SCALE IN FEET

FPA
FRENCH & PARRELLO ASSOCIATES

Hackettstown Office:
700 Grand Avenue, Unit 5A
Hackettstown, NJ 07840
908-850-0977

Wayne C. Ingram, P.E., P.L.S.
PROFESSIONAL ENGINEER, NEW JERSEY LIC. NO. 240942562

GRADING AND DRAINAGE PLAN - SOUTH
FOR
CLINTON COMMONS
65 1/2 CENTER STREET
BLOCK 14 LOT 32
TOWN OF CLINTON
HUNTERDON COUNTY, NEW JERSEY

DATE: 08/28/23
DRAWN BY: BH
DESIGNED BY: BH
CHECKED BY: WYV
SCALE: 1"=30'
FIELD BOOK
PROJECT NUMBER: 32606
SHEET: 7 of 24

COPYRIGHT © 2023, FRENCH & PARRELLO ASSOCIATES - THE COPYING OR REUSE OF THIS DOCUMENT, OR PORTIONS THEREOF, WITHOUT THE WRITTEN PERMISSION OF FRENCH & PARRELLO ASSOCIATES, IS PROHIBITED. DUE TO INHERENT ERRORS IN REPRODUCTION METHODS, ERRORS MAY OCCUR WHEN SCALING THIS DRAWING.

HAZARD AREA
LINE AS VERIFIED
FILE NO. 17-0002.1 LUP 200001

WETLANDS/WATER
LINE AS VERIFIED
FILE NO. 17-0002.1 FWW 170001

300' RIPARIAN BUFFER

300' WETLANDS BUFFER

300' WETLANDS BUFFER

300' WETLANDS BUFFER

300' WETLANDS BUFFER

300' WETLANDS BUFFER

300' WETLANDS BUFFER

300' WETLANDS BUFFER

300' WETLANDS BUFFER

300' WETLANDS BUFFER

300' WETLANDS BUFFER

300' WETLANDS BUFFER

300' WETLANDS BUFFER

300' WETLANDS BUFFER

300' WETLANDS BUFFER

300' WETLANDS BUFFER

300' WETLANDS BUFFER

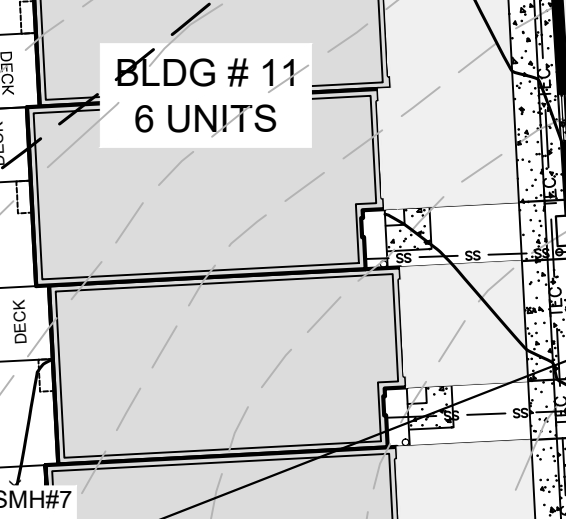
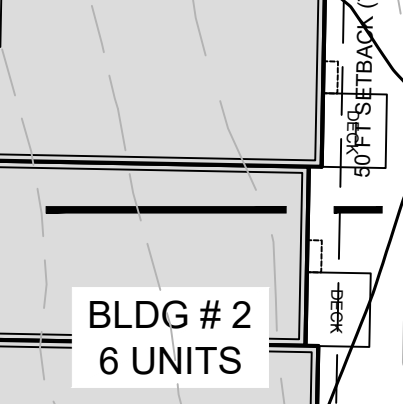
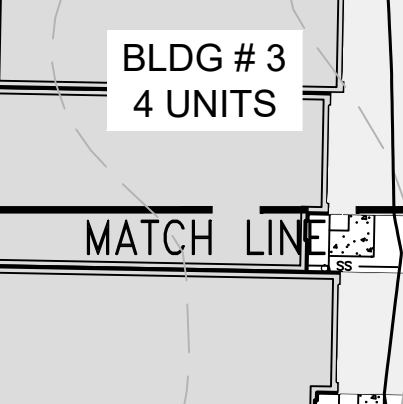
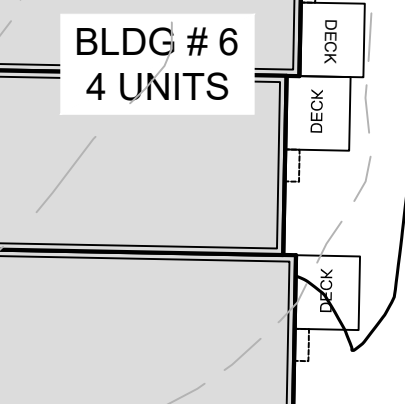
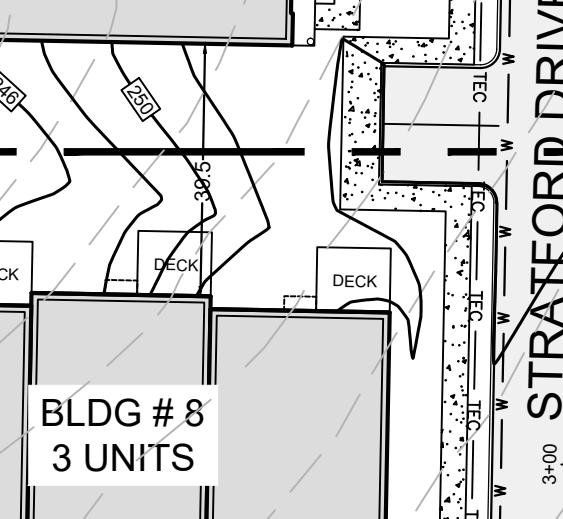
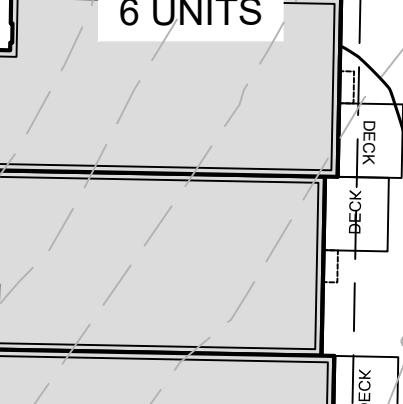
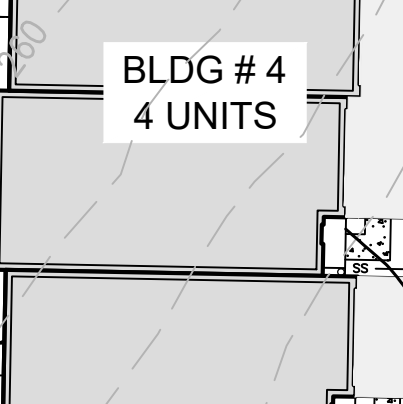
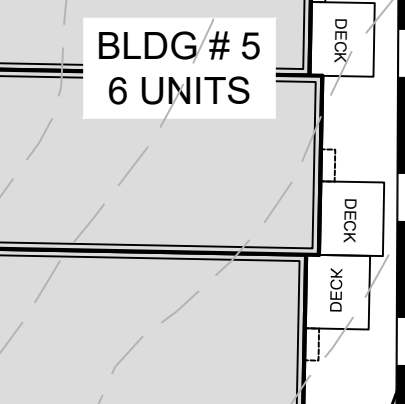
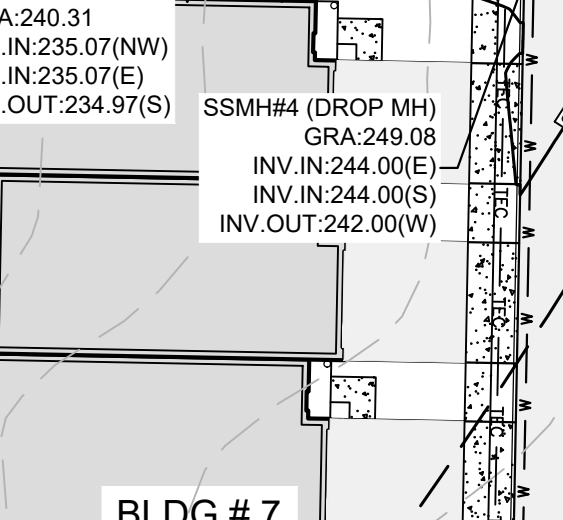
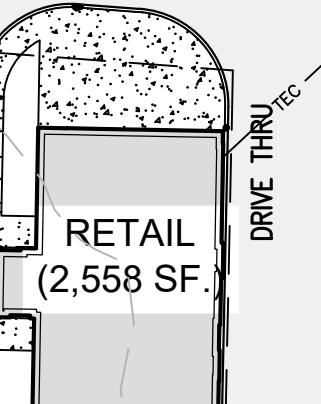
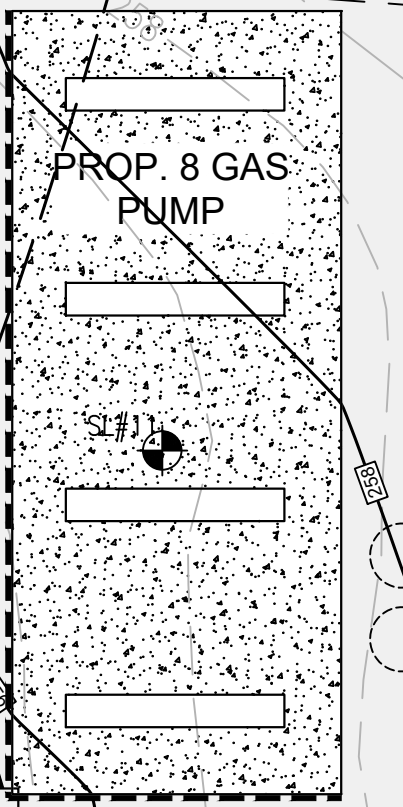
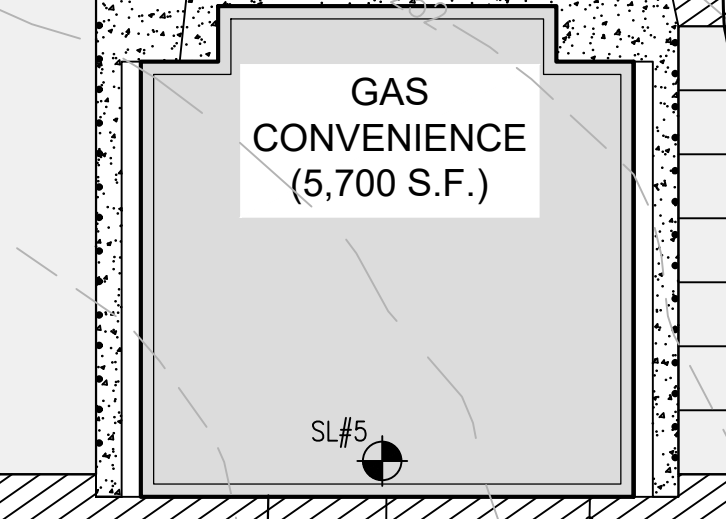
300' WETLANDS BUFFER

300' WETLANDS BUFFER

300' WETLANDS BUFFER

300' WETLANDS BUFFER

BLOCK 14
LOT 32
1,222,492 SF
28.06 AC



PROP. SCOUR HOLE
W1=5.0 FT, W2=2.5 FT
L1=4.75 FT, L2=1.50 FT
450#6, TH-12" W/ FABRIC

MATCH LINE

MATCH LINE

PROP. SCOUR HOLE
W1=5.0 FT, W2=12.5 FT
L1=7.5 FT, L2=15.0 FT
450#6, TH-12" W/ FABRIC

PROP. 3' WIDE GABION
RETAINING WALL

LEGEND:

- WATER SERVICE LINE
- GAS SERVICE LINE
- SANITARY SEWER LINE
- SANITARY SEWER LATERAL
- UNDERGROUND TELEPHONE
- ELECTRIC AND CABLE

1	10/31/23	Update Phasing Limits	BH	W
No.	Date	Revision	Revised By	Checked By

30 0 30 60
SCALE IN FEET

FPA
FRENCH & PARRELLO
ASSOCIATES

New Jersey • New York • Pennsylvania • Georgia

WJH
WAYNE J. INGRAM, P.E., P.L.S.
PROFESSIONAL ENGINEER, NEW JERSEY LIC. NO. 240942562

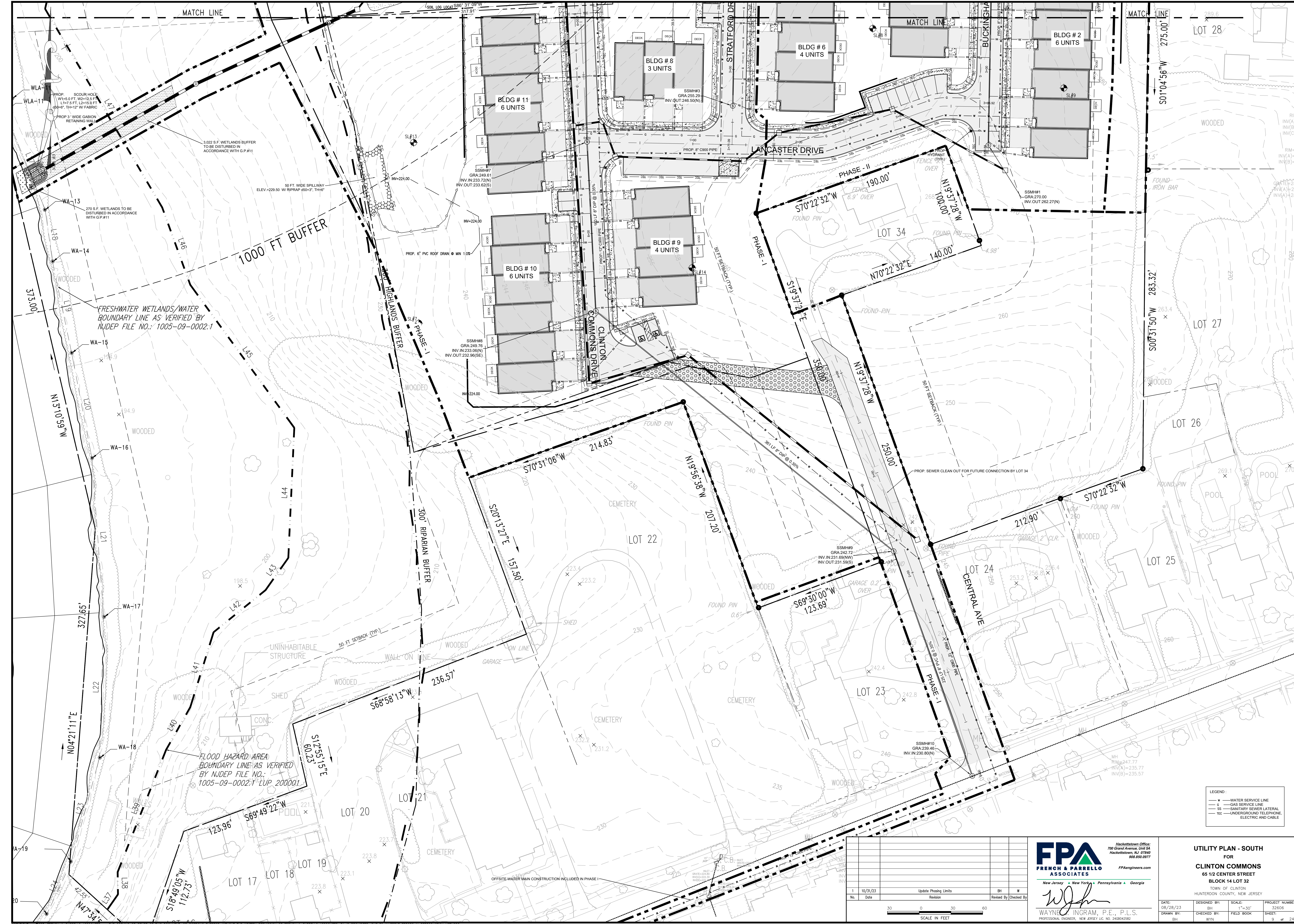
Hackettstown Office:
700 Grand Avenue, Unit 5A
Hackettstown, NJ 07840
908.650.0977

FPAengineers.com

UTILITY PLAN - NORTH
FOR
CLINTON COMMONS
65 1/2 CENTER STREET
BLOCK 14 LOT 32
TOWN OF CLINTON
HUNTERDON COUNTY, NEW JERSEY

DATE:	08/28/23	DESIGNED BY:	BH	SCALE:	1"=30'	PROJECT NUMBER:	32606
DRAWN BY:	WJH	CHECKED BY:	WJH	FIELD BOOK:		SHEET:	8 of 24

COPYRIGHT © 2023, FRENCH & PARRELLO ASSOCIATES - THE COPYING OR REUSE OF THIS DOCUMENT, OR PORTIONS THEREOF, WITHOUT THE WRITTEN PERMISSION OF FRENCH & PARRELLO ASSOCIATES, IS PROHIBITED. DUE TO INHERENT ERRORS IN REPRODUCTION METHODS, ERRORS MAY OCCUR WHEN SCALING THIS DRAWING.



COPYRIGHT © 2023 FRENCH & PARRELLO ASSOCIATES, PA. THE COPYING OR REUSE OF THIS DOCUMENT, OR PORTIONS THEREOF, WITHOUT THE WRITTEN PERMISSION OF FRENCH & PARRELLO ASSOCIATES, PA IS PROHIBITED. DUE TO INHERENT ERRORS IN REPRODUCTION METHODS, ERRORS MAY OCCUR WHEN SCALING THIS DRAWING.

LEGEND:

- W — WATER SERVICE LINE
- G — GAS SERVICE LINE
- SS — SANITARY SEWER LATERAL
- TEC — UNDERGROUND TELEPHONE, ELECTRIC AND CABLE

1	10/31/23	Update Phasing Limits	BH	W
No.	Date	Revision	Checked By	By

SCALE IN FEET

30 0 30 60

FPA
FRENCH & PARRELLO ASSOCIATES
 New Jersey • New York • Pennsylvania • Georgia

Hackettstown Office:
 700 Grand Avenue, Unit 5A
 Hackettstown, NJ 07840
 908-850-0977

Wayne C. Ingram, P.E., P.L.S.
 PROFESSIONAL ENGINEER, NEW JERSEY LIC. NO. 240942562

UTILITY PLAN - SOUTH
 FOR
CLINTON COMMONS
 65 1/2 CENTER STREET
 BLOCK 14 LOT 32
 TOWN OF CLINTON
 HUNTERDON COUNTY, NEW JERSEY

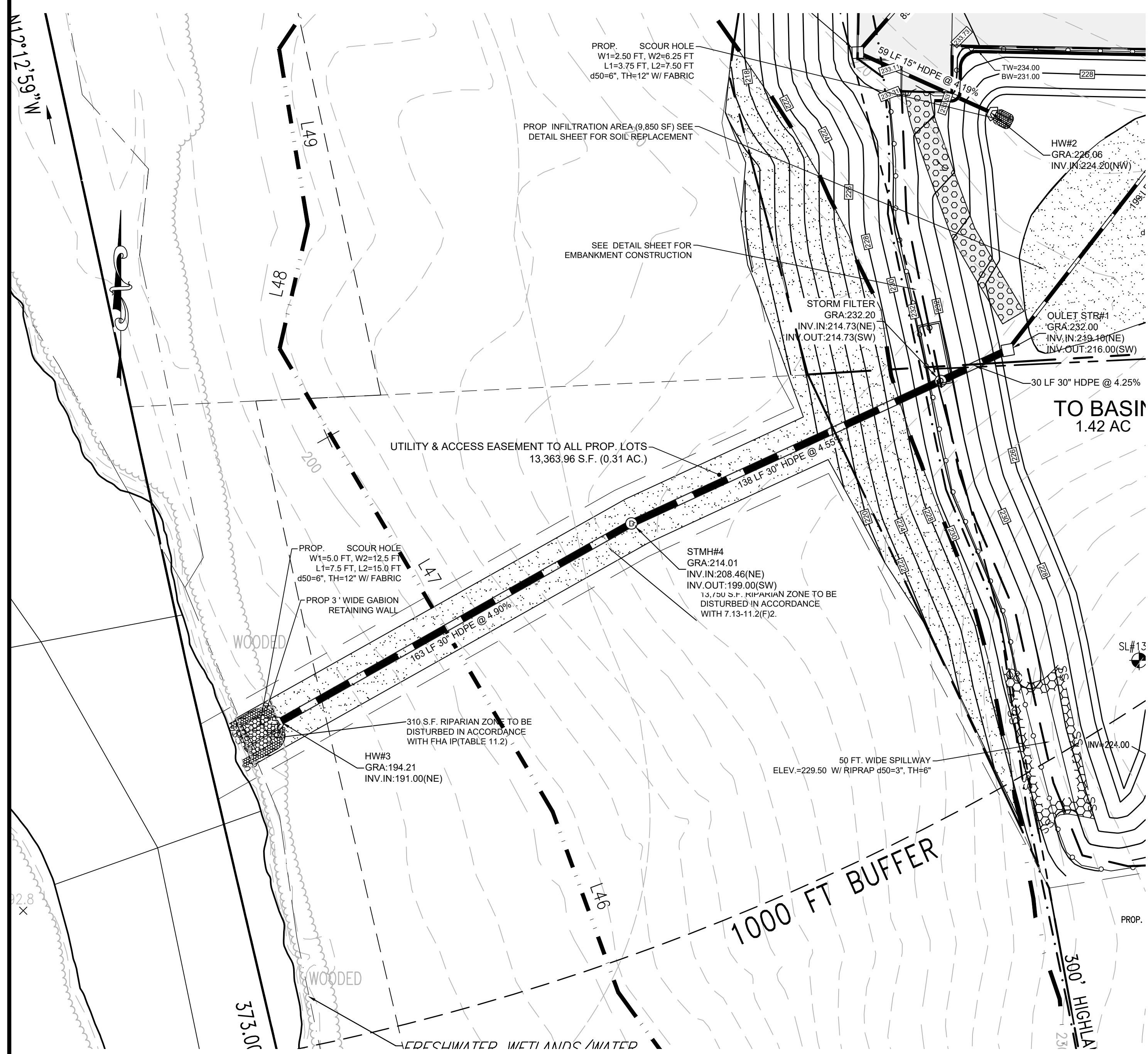
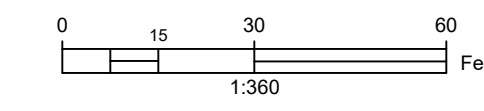
DATE: 08/28/23
 DESIGNED BY: BH
 DRAWN BY: BH

SCALE: 1"=30'
 CHECKED BY: WYN
 FIELD BOOK

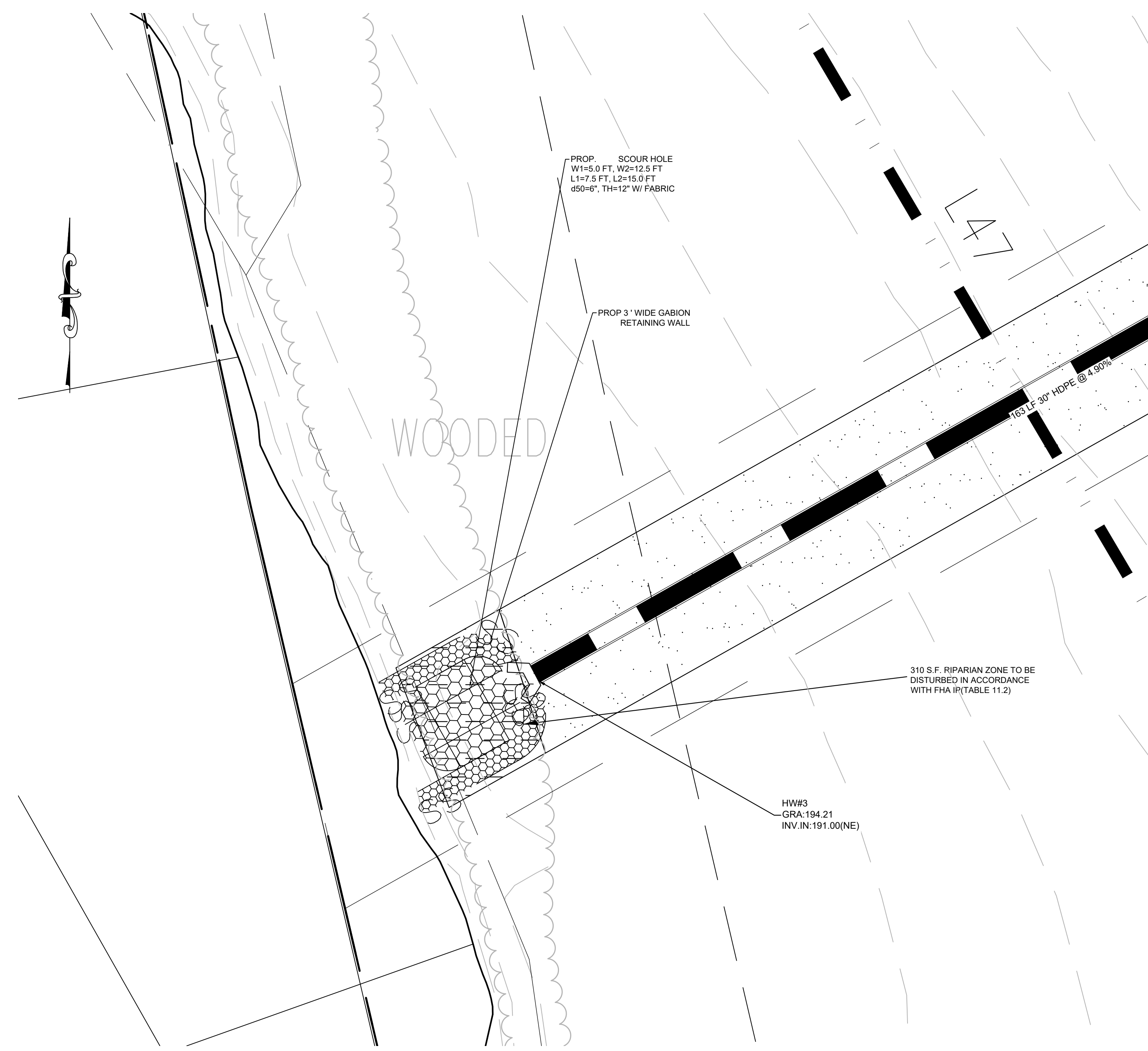
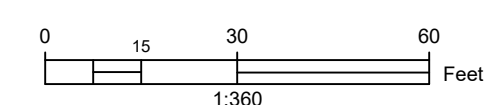
PROJECT NUMBER: 32606
 SHEET: 9 of 24



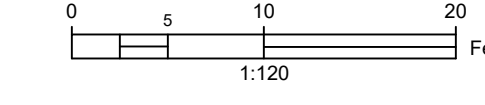
OFF SITE WATER MAIN PLAN



RIPARIAN BUFFER PERMIT PLAN



ENLARGEMENT OF H.W.#3



No.	Date	Revision	By	Checked By
1	10/31/23	Update Phasing Limits	BH	W

FPA
FRENCH & PARRELLO
ASSOCIATES

Hackettstown Office:
 700 Grand Avenue, Unit 5A
 Hackettstown, NJ 07840
 908-850-0977

PAengineers.com

New Jersey • New York • Pennsylvania • Georgia

WJH

WAYNE C. INGRAM, P.E., P.L.S.
 PROFESSIONAL ENGINEER, NEW JERSEY LIC. NO. 240942582

OFFSITE WATER MAIN & RIPARIAN BUFFER PLAN
 FOR
CLINTON COMMONS
 65 1/2 CENTER STREET
 BLOCK 14 LOT 32
 TOWN OF CLINTON
 HUNTERDON COUNTY, NEW JERSEY

DATE: 08/28/23
 DESIGNED BY: BH
 DRAWN BY: BH
 SCALE: AS SHOWN
 CHECKED BY: WYN
 FIELD BOOK
 PROJECT NUMBER: 32606
 SHEET: 4 of 24

COPYRIGHT © 2023 FRENCH & PARRELLO ASSOCIATES - THE COPYING OR REUSE OF THIS DOCUMENT, OR PORTIONS THEREOF, WITHOUT THE WRITTEN PERMISSION OF FRENCH & PARRELLO ASSOCIATES, PA IS PROHIBITED. DUE TO INHERENT ERRORS IN REPRODUCTION METHODS, ERRORS MAY OCCUR WHEN SCALING THIS DRAWING.